



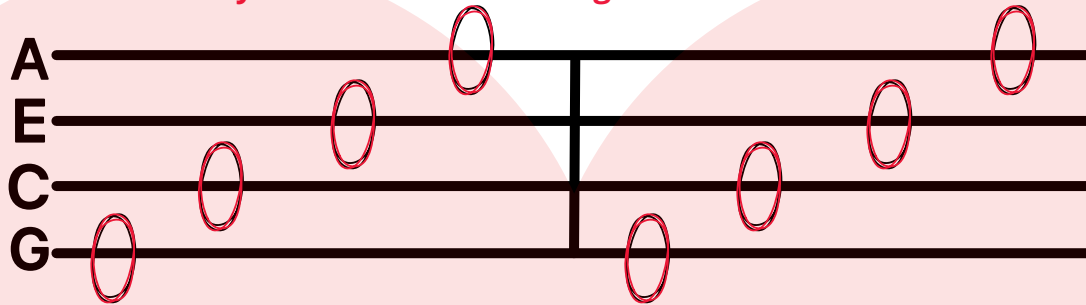
# Ukulele Tab



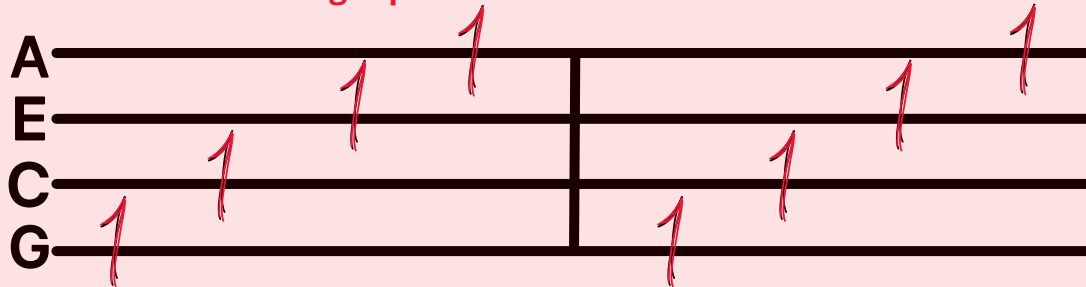
## How to read Ukulele Tab: for beginners

The 4 lines below are the 4 strings of your ukulele. G is the string closest to your chin and the A is the string closest to your lap. The numbers written on each string are the fret numbers. You will place your finger on that fret to play the note on that string. Try playing just the strings open with no finger pressing on a fret when you see a zero(0).

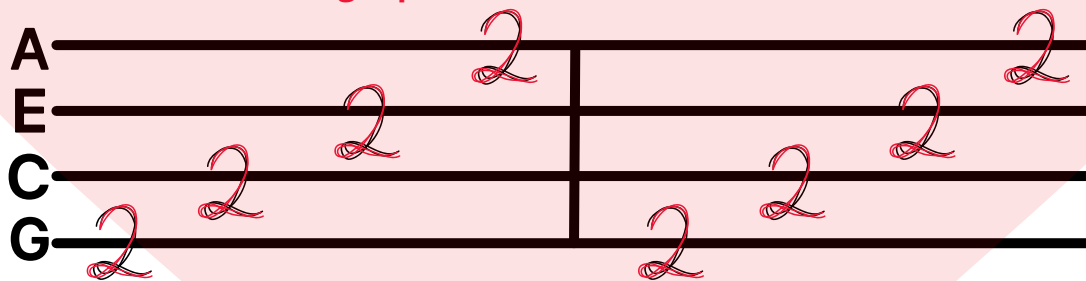
**Pluck and say the name of the string.**



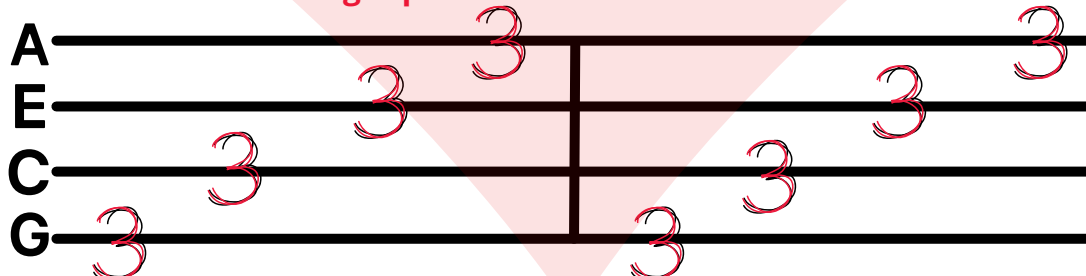
**Now lets add a finger placed on fret 1**



**Now lets add a finger placed on fret 2**



**Now lets add a finger placed on fret 3**





# Ukulele Tab



How to read Ukulele Tab: for beginners

Practice moving your finger from fret 1 to fret 2.  
Keep a steady beat as you play.

A		
E		
C		
G	1 1 1 1	2 2 2 2

A		
E		
C		
G	1 1 1 1	2 2 2 2

A		
E		
C		
G	1 1 1 1	2 2 2 2

A		
E		
C		
G	1 1 1 1	2 2 2 2



# Ukulele Tab



How to read Ukulele Tab: for beginners

Write in your own fret numbers and practice reading and playing different frets on all 4 strings.

A		
E		
C		
G		

A		
E		
C		
G		

A		
E		
C		
G		

A		
E		
C		
G		